



Wildlife Photography Africa

Your dream safari is closer than you think

From Lusaka to Livingstone 10 days in Zambia's Kafue National Park

Located in the centre of western Zambia, Kafue National Park is the oldest and largest of Zambia's national parks. It covers a massive 22,400 km².

First established as a National Park in the 1950's by the legendary Norman Carr, Kafue is one of the largest national parks in the whole of Africa. Despite its size and prominent location only two hours drive from Livingstone, it remains little-known and largely unexplored with vast tracts of its virgin bush still untouched. Thanks to its size and variety of habitat types the Kafue holds a fantastic diversity of wildlife.



What will you see?

Kafue is not about the sheer numbers of wildlife you see, it is about the diversity of wildlife you see. The Kafue is home to more species of ungulate than any national park south of the Congo Basin. Rare and elusive antelope such as the blue and yellow-backed duiker occur in the thickets, sitatunga and lechwe in the swamps, roan, sable and hartebeest in the miombo woodlands.

The park is regarded by those who know it as one of the best places in Africa to find leopard.

A rarity for Zambia is the cheetah. Cheetah can not be found in the Luangwa or Zambezi national parks and only occur in the west of Zambia, with Liuwa Plains and the Kafue holding the last viable populations of this rare and charismatic predator.



Wildlife Photography Africa

Your dream safari is closer than you think

For our safari in the Kafue National Park we have chosen 3 unique but complementary camps. Situated in 3 different habitats they give you the opportunity to appreciate the size and diversity of this great wilderness area.



Outline itinerary:

- Day 1 Arrive in Lusaka where you will be met and transferred to Mayukuyuku Bush Camp.
- Days 2-4 – Mayukuyuku Bush Camp. 3 full days to explore. Activities include game drives, walking safaris and boat trips. You can even go fishing.
- Day 5 Mayukuyuku Bush Camp to Konkamoya
Game drive through the park, south to Konkamoya.
- Days 6-8 Konkamoya. Located by Lake Iteshi Teshi, Konkamoya is an ideal base from which to discover the wildlife around this 370sq km lake.
- Day 9 Transfer from Konkamoya to Nanzhila Plains Safari Camp
- Day 10 A full day at Nanzhila Plains.
- Day 11 Transfer from Nanzhila Plains to Livingstone.
Waterberry Zambezi Lodge
- Day 12 Services end

Detailed itinerary:

Day 1 Lusaka to Kafue National Park

Arrive in Lusaka where you will be met and transferred to Mayukuyuku Bush Camp.

Mayukuyuku is situated between the lightly wooded tree line and the Kafue riverbank. This intimate camp has just 4 luxury en-suite permanent tents under thatched roofs with their own verandahs, each one overlooking the river.



Wildlife Photography Africa

Your dream safari is closer than you think



Days 2-4 – Mayukuyuku Bush Camp.

3 full days to explore. Activities include:

Game drives - early morning and sundowner game drives in open vehicles. The sundowner drive turns into a night drive that reveals the nocturnal species.

Walking safaris - walking at a leisurely pace through the bush, with a guide and armed scout affords the opportunity to get closer to fauna, flora and spoor.



Wildlife Photography Africa

Your dream safari is closer than you think

Boat trips - a very relaxing experience; ideal for viewing game coming to the river to drink, hippos and crocodiles bird watching and fishing.

Day 5 Mayukuyuku Bush Camp to Konkamoya

Game drive through the park, south to Konkamoya.

Nestled on the banks of the Iteshi Teshi lake Konkamoya Lodge has four luxurious safari tents furnished in a colonial style.

Every tent is like a small apartment, with bedroom, sitting room, a bathroom with hot and cold running water and shower. The tents are raised on wooden platforms that keep the tent a meter from the ground and distant from any unwanted guests.





Wildlife Photography Africa

Your dream safari is closer than you think

All the tents face east; looking across the lake with a marvellous view of the renowned African sunrise.



Days 6-8 Konkamoya

Konkamoya is an ideal base from which to discover the wildlife around this 370sq km lake. And there is plenty to see with lion, leopard and cheetah in the area, as well as wild dogs. There is also an abundance of antelope species and you can expect to see kudu, sable, puku and impala.





Wildlife Photography Africa

Your dream safari is closer than you think

For many one of the highlights of a stay at Konkamoya is the opportunity to make night drives in search of the shy, nocturnal Aardvark.



Day 9

Konkamoya to Nanzhila Plains

The transfer from Konkamoya to Nanzhila Plains Safari Camp takes the form of an extended game drive.





Wildlife Photography Africa

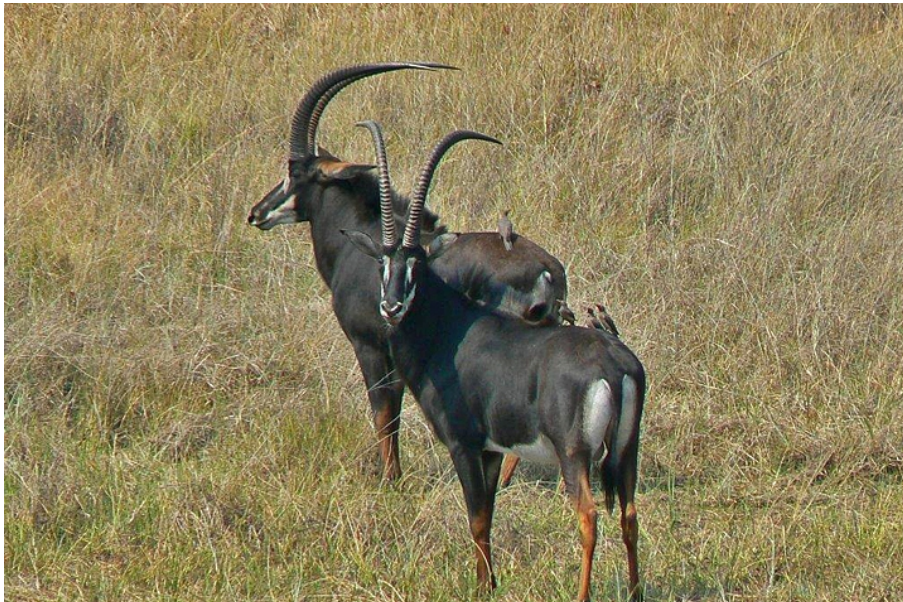
Your dream safari is closer than you think

Day 10 Nanzhila Plains

A full day at Nanzhila Plains.

Located in the far south of the largely undeveloped and pristine Kafue National Park, this intimate 12-bed lodge is in the very heart of the African bush and is the ideal spot for viewing the incredible diversity of wildlife that call the Park home.

Whether it be watching elephant drinking from dambos, cheetah scanning the plain or the rare Black-cheeked Lovebird, endemic to this part of Zambia, you'll enjoy an African idyll second to none.



At Nanzhila Plains Safari Camp you can be as active or lazy as you choose. Game drives are always popular and they take place early in the morning and mid-to late afternoon, when wildlife is most active.

Because Kafue National Park is mostly undeveloped, the chances of encountering other tourist traffic are remote. Accompanied by a knowledgeable guide, you will feel as if you have the entire park to yourself. Night drives are a Zambian specialty and are offered as an extension of an afternoon drive, incorporating a sundowner, or as a stand-alone after-dinner activity. For keen nature lovers, guided walks and bush trails are a must.



Wildlife Photography Africa

Your dream safari is closer than you think

Day 11 Transfer from Nanzhila Plains to Livingstone. Waterberry Zambezi Lodge

After your morning game activity and a hearty breakfast it is time to drive down to Livingstone, on the banks of the mighty Zambezi.

Waterberry Zambezi Lodge has a range of comfortable accommodation, close enough to Livingstone to enjoy all the activities there, but far enough away to escape the crowds and feel a real sensation of being in the wild.





Wildlife Photography Africa

Your dream safari is closer than you think

Double, twin or family bedrooms are open to the high thatch (nice and cooling in the hot sun), with comfortable beds, en suite bathrooms, mosquito nets overhead fans and air conditioning.

Most have private decks overlooking the river or our private dam (great for sundowners, private dinners, birdwatching or just sitting around with a good book).

Your stay at Waterberry Lodge includes a boat trip on the river; either early morning or around sunset.

Day 12 Livingstone

Services end with a transfer to Livingstone where you can connect with your onward travel arrangements.

When to visit

- **April & May:** 23° to 27° Good for all species, especially Sable. Warm weather clothes, plus a fleece in May. June, July, August: Winter, cool and dry 14° to 20°. Good for all species. Otters. Ski Jacket, woolly hat, gloves on game drives, Excellent light for photography.
- **Sept, Oct:** hot months 25° to 35°. Good for all species including Wild Dog. Not good for Sable till late Oct. Summer clothing. Wildlife comes to the river.
- **Nov – Dec:** short showers 20° to 35°. Good for all species, Sable, Wild Dog. Excellent birding and walking. Light raincoat, closed boots. Excellent for photography – landscape very green. Baby animals. December: good fishing, catch & release only.



Wildlife Photography Africa

Your dream safari is closer than you think

Price per person sharing 2015

US\$4,685 / £2,930

Price includes:

Transfer on arrival from Lusaka to Mayukuyuku Bush Camp
In park transfer from Mayukuyuku Bush Camp to Konkamoya
In park transfer from Konkamoya to Nanzhila Plains Safari Camp
Transfer from Nanzhila Plains to Waterberry Zambezi Lodge
Transfer from Waterberry Zambezi Lodge to Livingstone
All park and conservation fees
Game activities

Accommodation as follows:

4 nights – Mayukuyuku Bush Camp – Full board, 2 game activities per day,
refreshments on game drives
4 nights – Konkamoya – Full board, 2 game activities per day, selected

beverages

2 nights – Nanzhila Plains Safari Lodge – Full board, 2 game activities per day,
refreshments on game drives
1 night – Waterberry Zambezi Lodge – Full board, beverages, 1 game activity

Price excludes:

International flights
visa costs
Travel insurance
tips
Meals other than those listed
Drinks and beverages other than those specified.